

## Status of Domestic Corporations & Governmental Policy in Cloud Computing

Jong-Tae Ihm · Jin Taek Kim

가 ICT

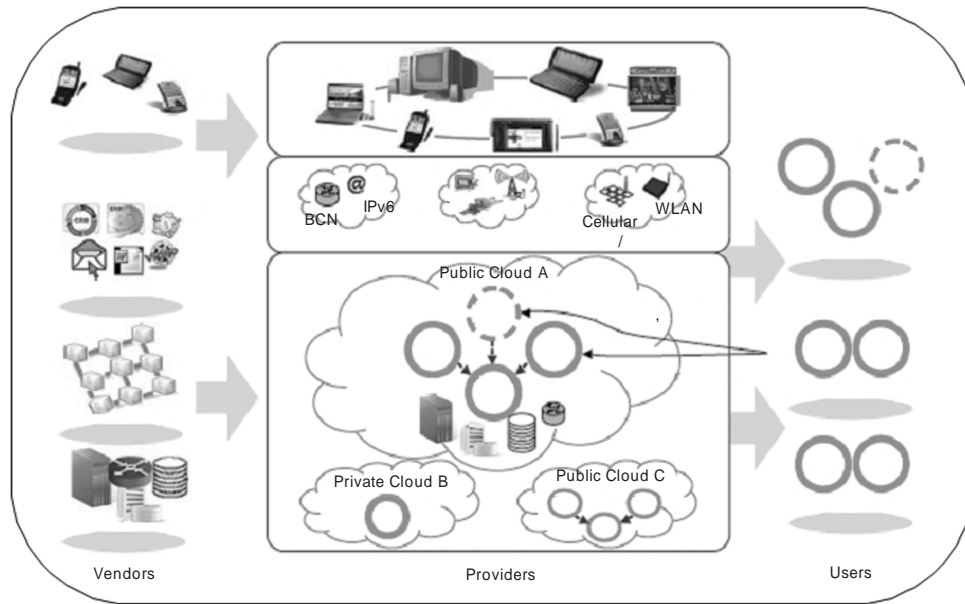
Recently attracting attention from national and international ICT industry in the cloud computing market has grown very rapidly and that changes will the benefits of cloud computing, which in cost and time savings, efficiency, and flexibility, and so driven by many companies seem to be getting. In this paper that make up cloud computing ecosystem, a look at the characteristics of the group, then based on their ecological surveys for major companies through the national carrier status and the difficulties of the enterprise by identifying the cloud computing industry's global competitiveness for government policy and initiative, trying to get presents.

Keywords: Cloud computing, Policy, Ecosystem, Suvey

### I.

, IT  
가 ( , 2010).  
IT 가  
1)  
(Cloud  
Computing)  
IT  
IT





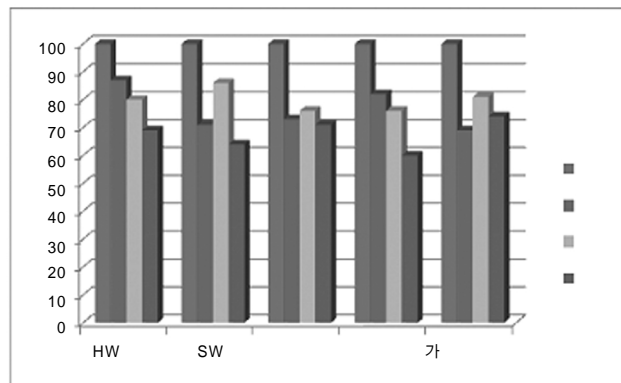
1.

1.

	SKT, SK Broadband, KT, LG U+
	NHN, Daum
IT	SDS, LG CNS, SK C&C, CNI, I&C
HW/SW	, MS, Ahnlab, HP, EMC, Cisco, , ,

SDS, LG CNS, SK C&C, 30  
 CNI . 1 30 24  
 2. , 가  
 2.1. .

1 2.2.  
 ,  
 2011 1 가 ,  
 1 / 2.2.1. 가  
 , IT , 가  
 가 4 217 가 100 ,



2. 가

2. 가

	100	87	80	69
	100	71	86	64
	100	73	76	71
	100	82	76	60
가	100	69	81	74

3.

가

가			%
		8	34.9
		5	21.7
	Rackspace	2	8.8
	SAVVIS	2	8.8
	MS	1	4.3
	IBM	1	4.3
	VMware	1	4.3
	EMC	1	4.3
	Symantec	1	4.3

, , 가 5 .

가 , , 2, 2 가 가

가 ( 3 ) ,

, , ( 4 ) .

가

가

가

4.

		%
	9	27.2
	7	21.2
	5	15.2
	2	6.1
	3	9.1
	3	9.1
	3	9.1
	1	3.0
	33	100.0

5.

	HW	SW	IDC			
	-	1	3	-	-	4
	-	-	-	-	2	2
IT	-	-	2	2	1	5
HW/SW	-	1	7	-	5	13
	0	2	12	2	1	17
%	0	11.8	70.6	11.8	5.8	100

6.

	2009		2010	
	10	2	141	4
	-	-	30	1
IT	81	2	149	3
HW/SW	27	7	186	9
	118	11	506	17

.

가 .

5 IDC 가

IDC , 가 .

IDC 가 2.2.2.

PC ,

LG 가 2009 1

7.

	3	2	-	-	5
	-	-	1	1	2
IT	-	1	3	1	5
HW/SW	4	3	5	3	15
	7	6	9	5	27
%	26.0	22.2	33.3	18.5	100

8.

SW

	(%)	
	43.8	4
	0.0	2
IT	60.0	5
HW/SW	29.0	10
	36.4	21

9.

SW

		%
	10	71.4
	2	14.3
	2	14.3
	14	100.0

118 2010 506 2009 , , .  
300% 가 .

SW .  
36.4% SW  
IT 가 가 60.0%,  
43.8% SW .

2.2.3.

( 6 ).  
( 7 ).

IDC

( 9 ).

( 10 ).

10.

		%
	11	25.0
	8	18.2
	6	13.6
	6	13.6
	5	11.4
	4	9.1
	4	9.1
	44	100.0

11.

		%
	21	60.0
	6	17.1
	5	14.3
	3	8.6
	35	100.0

12.

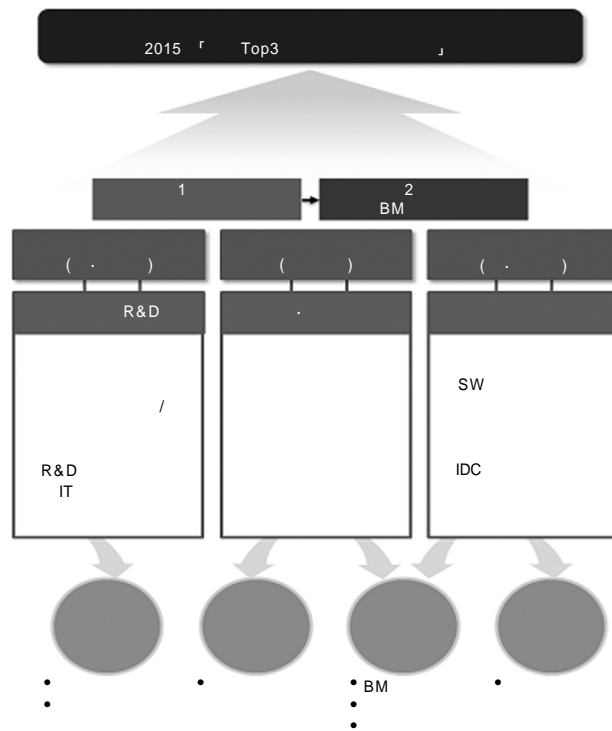
		%
-	10	23.8
	9	21.4
	9	21.4
	7	16.7
	2	4.8
-	1	2.4
	4	9.5
	42	100.0

IT SW 60.0% . , IT ( 11 ). 3 가 ( 12 ). 3 10가

## IV.

R&amp;D

가 , ,



3.

가

가 IDC

(Inter-Cloud) 가 IDC 가

R&D가 IT

R&D가

R&D

IT

1 V.

SW





(Jong-Tae Ihm)

1986:  
 1988:  
 1993:  
 1993:  
 1993: SK 1  
 1997: SK PT  
 1998: SK PT  
 2000: SK  
 2003: SK Network Access  
 2005: SK Platform  
 2006: SK Access  
 2009: SK Data Network  
 2010~ : SK Network  
 :  
 E-mail: jtihm@sk.com  
 Tel: + 82-2-6100-5100



(Jin Taek Kim)

1996:  
 2000:  
 1996 ~ 2000:  
 2005 ~ 2009:  
 2010: PG  
 2009 ~ : 가  
 2010 ~ :  
 2010 ~ :  
 : Cloud computing , Green computing  
 E-mail: jtkim@cccr.or.kr  
 Tel: + 82-19-293-9308